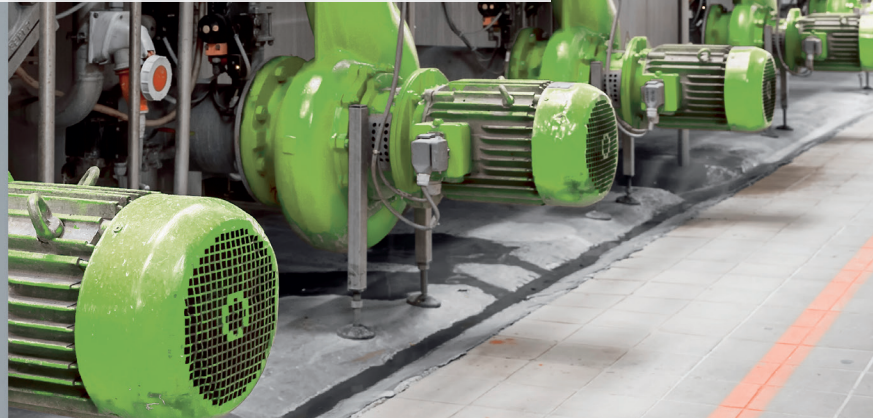
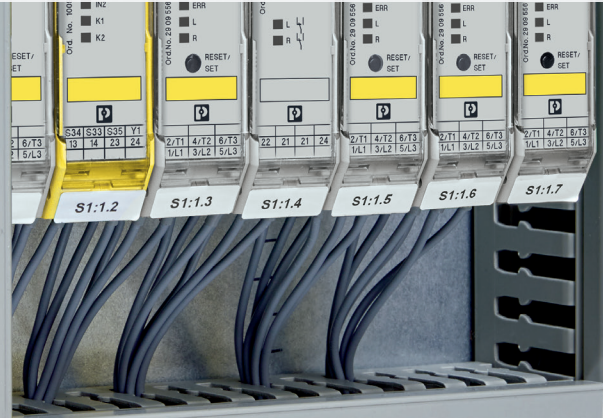




Intelligent switching, protection, monitoring and measurement

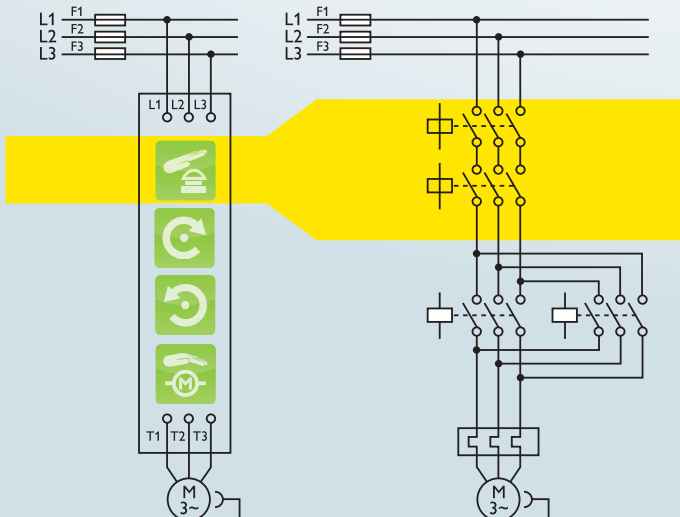


CONTACTRON Hybrid Technology

CONTACTRON hybrid technology is a microprocessor-controlled combination of wear-free solid-state technology and robust relay technology. The semiconductors execute the wear-prone on and off switching procedures, while the relays only conduct low-loss current. This enables soft switching and considerably reduces the load on the relay contacts.



CONTACTRON compared to traditional solutions



Ask us more

Call: 02 6043 8400

Email: alburysales@remtron.com.au

444 Wilson Street, Albury NSW 2640

Network- capable hybrid motor starters

3 AC motors up to 500 V AC

		Functions				Connection
		Direct Starter	Reversing Starter	Emergency stop	Motor Protection	Screw
Maximum load current	Control Voltage					
3 A	24 V DC	●	-	●	●	2905155
		●	●	●	●	2905152
		●	-	-	●	2905163
		●	●	-	●	2905159
9 A	24 V DC	●	-	●	●	2905156
		●	●	-	●	2905153
		●	-	-	●	2905164
		●	●	-	●	2905160
0.6 A	24 V DC	●	●	●	●	2905151

Hybrid motor starter

0.6 A	24 V DC	●	-	●	●	2900566
		●	●	●	●	2900582
		●	-	-	●	2900542
		●	●	-	●	2900573
2.4 A	24 V DC	●	-	●	●	2900567
		●	●	●	●	2900414
		●	-	-	●	2900543
		●	●	-	●	2900574
9 A	24 V DC	●	-	●	●	2900569
		●	●	●	●	2900421
		●	-	-	●	2900545
		●	●	-	●	2900576



Bridge

	Functions				Connection
Length	3 Phase loop bridge	No of modules	Housing width	Connecting cable length	Screw
2-3M	●	2	22.5 mm	3 m	2901543
3-3M	●	3	22.5 mm	3 m	2901656
4-3M	●	4	22.5 mm	3 m	2901659
5-3M	●	5	22.5 mm	3 m	2901545
6-3M	●	6	22.5 mm	3 m	2901697
7-3M	●	7	22.5 mm	3 m	2901698
8-3M	●	8	22.5 mm	3 m	2901700
9-3M	●	9	22.5 mm	3 m	2901701
10-3M	●	10	22.5 mm	3 m	2901702

Part #	Description	Gateways
2901988	EM-ETH-GATEWAY-IFS	Gateway for the connection of up to 32 INTERFACE system devices to a higher-level controller via EtherNet/IP™. The INTERFACE system devices are connected to the Gateway via DIN rail connectors, the DIN rail connectors are provided.
2904472	EM-PNET-GATEWAY-IFS	Gateway for the connection of up to 32 INTERFACE system devices via PROFINET to a higher-level controller. The INTERFACE system devices are connected to the Gateway via DIN rail connectors, the DIN rail connectors are provided.
Part #	Description	Accessories
2320500	IFS-USB-DATACABLE	Used for communicating between industrial PCs and Phoenix Contact devices with the 12-pos. IFS data port, such as QUINT UPS or TRIO UPS.
2906240	BRIDGE COVER	The BRIDGE COVER covering hood is used to cover unused plugs on the CONTACTRON bridge that may subsequently be used to extend the system. The hood can be used with the screw and Push-in version of the bridge.